

# V. MUSCULAR SYSTEM / TORSO

## MUSCLES OF THE PERINEUM

CN: (1) Color gray the title *perineum* (\*) and the two related diamond-shaped areas at the top of the plate. *urogenital triangle* and *anal triangle*, and their respective triangles. (3) Color the lower views simultaneously.

**PERINEUM:\*** (BOUNDARIES):  
**SYMPHYSIS PUBIS<sub>A</sub>**  
**COCCYX<sub>B</sub>**  
**ISCHIAL TUBEROSITY:**  
**SACROTUBEROUS LIGAMENT,**  
**ISCHIO-PUBIC RAMUS<sub>E</sub>**

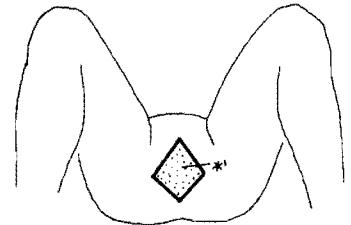
The 3-dimensional *perineum* is the region below the pelvic cavity situated within the pelvic outlet. It is bordered by structures A-E. Its floor (inferior border) is skin and fascia; its roof is the pelvic diaphragm. The diamond-shaped perineum is bisected at the *ischial tuberosities* into the urogenital and anal triangles.

**UROGENITAL TRIANGLE:\***  
**ISCHIOCAVERNOSUS M.<sub>D,F</sub>**  
**BULBOSPONGIOSUS M.<sub>G</sub>**  
**SUP. TRANSVERSE PERINEAL M.<sub>H</sub>**  
**UROGENITAL DIAPHRAGM<sub>I</sub>**

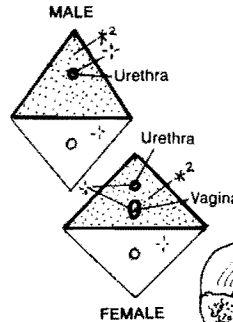
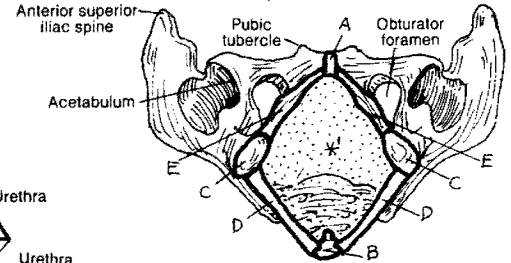
The *urogenital triangle* contains the penis, scrotum, and related structures in the male and the clitoris, urethral and vaginal orifices, and related structures in the female. It includes: (1) the anterior recess of the ischio-rectal fossa, (2) the *urogenital diaphragm* composed of the deep transverse perineal muscle and sphincter urethrae, and (3) the superficial perineal space, containing the *ischiocavernosus* and *bulbospongiosus* muscles. These muscles ensheath the roots of the erectile bodies of the penis/clitoris, aiding in their erection. *Bulbospongiosus* also contracts rhythmically during the ejaculation of semen. The *superficial transverse perineal* muscles stabilize the fibrous perineal body which helps anchor the perineal structures.

**ANAL TRIANGLE:\***  
**LEVATOR ANI M.<sub>J</sub>**  
**EXTERNAL SPHINCTER ANI M.<sub>K</sub>**  
**ANOCOCYCYGEAL LIGAMENT.**

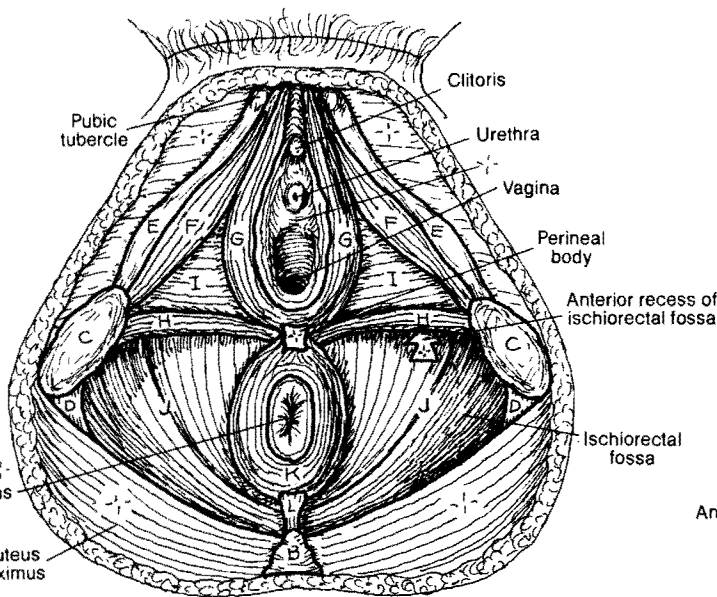
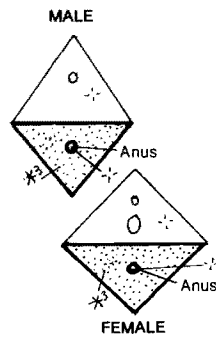
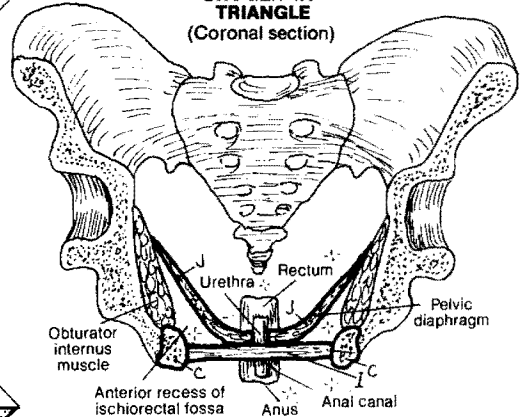
The *anal triangle* includes the fat-filled ischio-rectal fossae and the anal opening (anus) and its *external sphincter ani* muscle. The inferior fibers of the *anococcygeal ligament* give attachment to the anal sphincter.



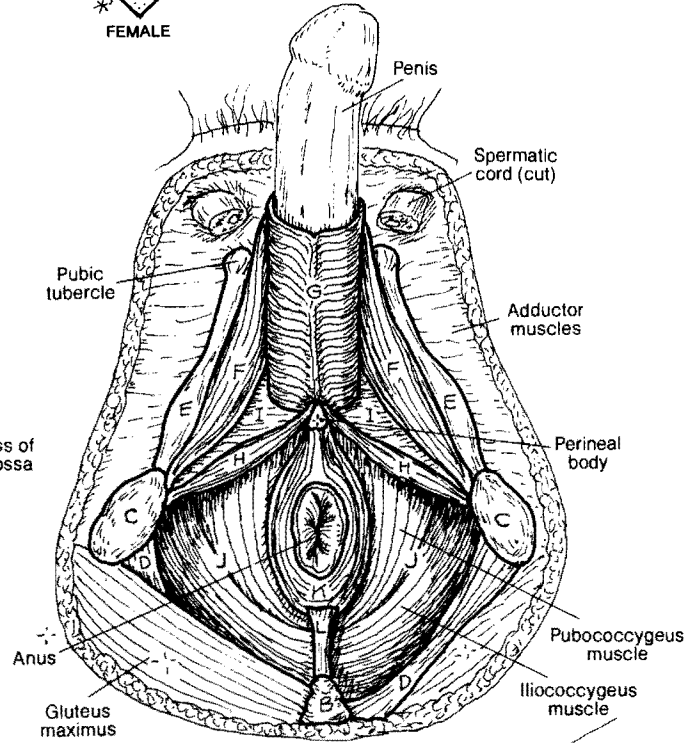
**BOUNDARIES OF PERINEUM (From below)**



**UROGENITAL TRIANGLE (Coronal section)**



**FEMALE PERINEUM**



**MALE PERINEUM**